



Clean Water Doesn't Stay Clean

In the absence of good sanitation and hygiene practices, clean water becomes polluted and makes a community susceptible to water-borne illness. Combining clean water access with sanitation and hygiene access, will WASH a community.



The Toll of Unclean Water

Toll on People

- **2.5 billion people** live without improved sanitation.²
- **750 million people** live without access to clean water.²
- **1,600 children** under the age of 5 die every day from preventable, water-borne diseases.³



Toll on Society

- Over **400 million school days** lost each year to water-related illness.⁴
- Over **40 billion productive hours** lost each year to fetching water in sub-Saharan Africa.⁴
- About **half** the developing world's hospital beds occupied by people with water-related illness.⁴
- A \$1 investment in WASH yields **\$3-34** in economic return,⁵ but lack of WASH can **cost up to 5%** of a country's GDP.⁶



How Water Becomes Unclean

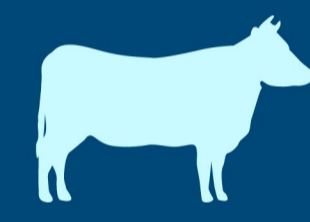
Open defecation

1.1 billion people (15% of the global population) practice open defecation.¹
Top countries for open defecation:

India (626 million) | Indonesia (63 million)
Pakistan (40 million) | Ethiopia (38 million)
Nigeria (34 million)



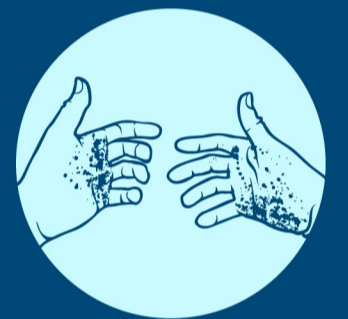
Animals contaminate water sources



Flies spread germs



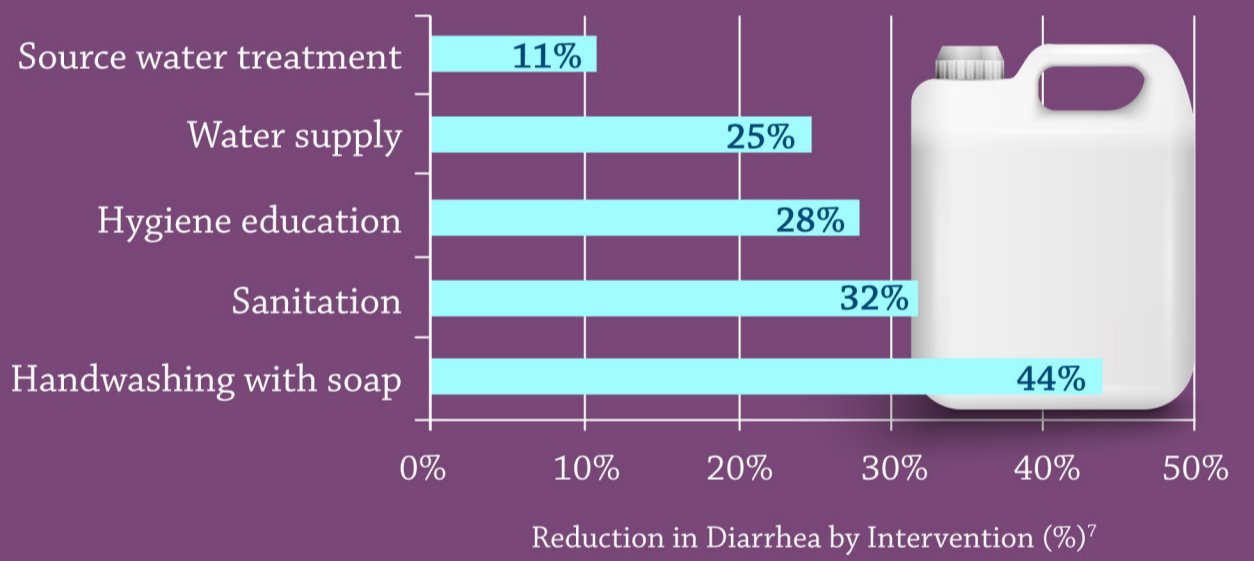
Lack of hand washing



What Makes the Difference?

Clean water starts with access to clean water supply, but **keeping water clean requires much more.**

This example of the reduction in diarrhea shows the contributions to improved health.



Innovative Approaches to Helping Water Stay Clean

UGANDA

A **picture book** explains germs, sanitation and clean water to children.⁸

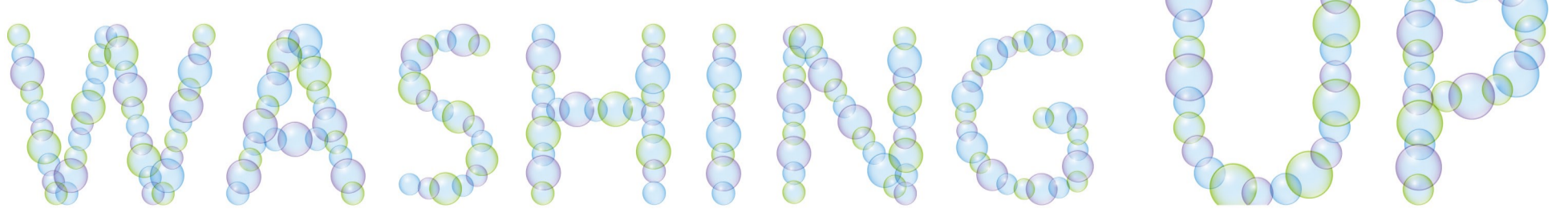


MALI

A village in Mali now has **no open defecation** after a coordinated, community-based effort to provide coordination of a clean water source, latrines and hand-washing training. The villagers are experiencing better health.⁹

HONDURAS

A community in Honduras showed an approximate 52% reduction of clinical visits for diarrheal diseases in the 34 months after the **community water system** became fully operational. The project included coordinated water, sanitation and hygiene and locally-based community development.¹⁰



PRAY for churches and ministries that are providing holistic wellness, including water, sanitation and hygiene, to communities around the world.

LOOK for organizations that promote an integrated approach to water ministry that is tackling the bigger challenge, not just the water source.

SHARE about the impact of WASH and educate those in your sphere of influence.

Sources listed at www.missiographics.com/wash



To find more infographics from GMI visit www.missiographics.com

Brought to you by our sponsor:



Lifewater

<http://lifewater.org>

Providing water, health and hope since 1977.