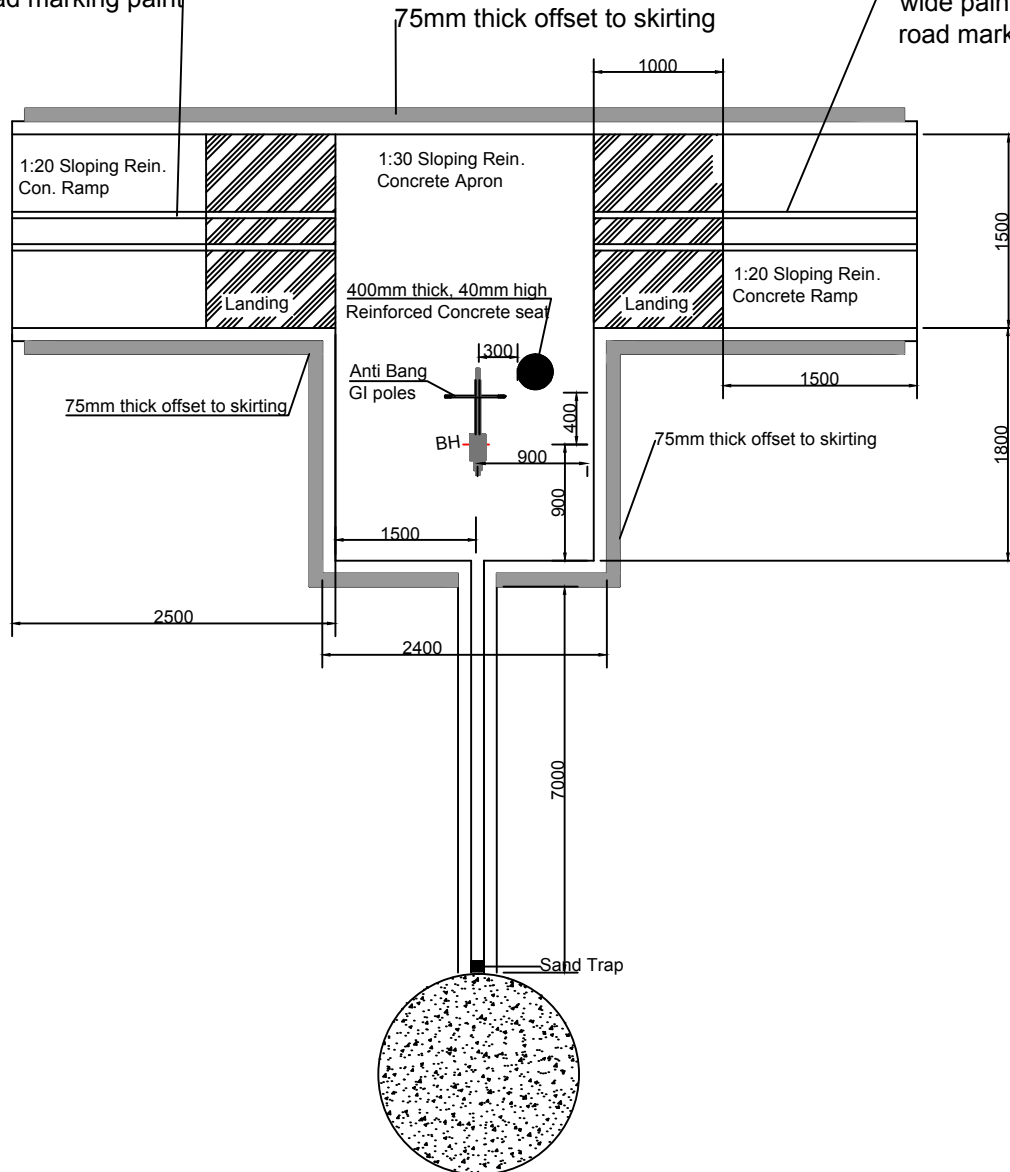


Gidelines are 200mm apart, 20mm thick & 50mm wide painted with white road marking paint

Gidelines are 200mm apart, 20mm thick & 50mm wide painted with white road marking paint



NOTES:

1. Apron to be of reinforced concrete, 1:2:4 mix.
2. 1 in 20 ramp to cater for a disabled person
3. Guidelines are 200mm apart, 20mm thick and 50mm wide painted white road paint.

NOTE:

Soak pit and fencing will be done by the beneficiaries

PROJECT:

PROPOSED INCLUSIVE BOREHOLE DESIGN TO BE PILOTED IN SELECTED PRIMARY SCHOOL

DRAWING:

APRON PLAN AND PWD SEATS

DRAFTED BY: BRIAN OKETHA

DATE: JANUARY 2018

CHECK:

SHEET:

SCALE: NTS

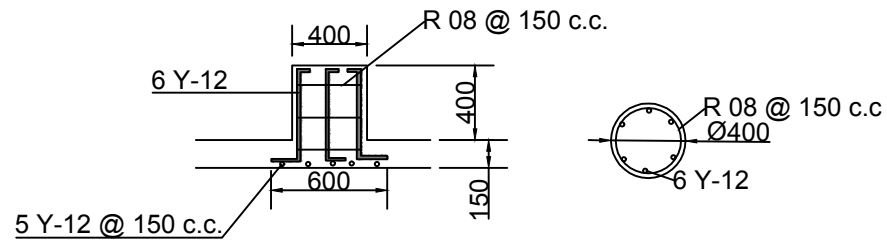
1 of 2

LIFEWATER INTERNATIONAL UGANDA COUNTRY PROGRAM

P. O. BOX 21741 Kampala - Uganda.
TEL: +256 701 201 133/+256 772 666 240
Email: kalirouganda@lifewater.org/
mayugeuganda@lifewater.org
Website: lifewater.org

JOB. NO: IC/

REV.



SEAT REIN. LAYOUT

PROJECT:

PROPOSED INCLUSIVE BOREHOLE DESIGN
TO BE PILOTED IN PRIMARY SCHOOLS

DRAWING:

PWD SEAT DETAIL

DRAFTED BY: BRIAN OKETHA DATE: JANUARY 2018

CHECK: SHEET:
SCALE: NTS 1 of 1

**LIFEWATER INTERNATIONAL
UGANDA COUNTRY PROGRAM**

**P. O. BOX 21741 Kampala - Uganda.
TEL: +256 701 201 133/+256 772 666 240
Email: kalirouganda@lifewater.org/
mayugeuganda@lifewater.org
Website: lifewater.org**

JOB. NO: IC/

REV.